

A **RENSON** Product

RENSONTM
Formwork Systems

ALUMINIUM FORMWORK SYSTEMS



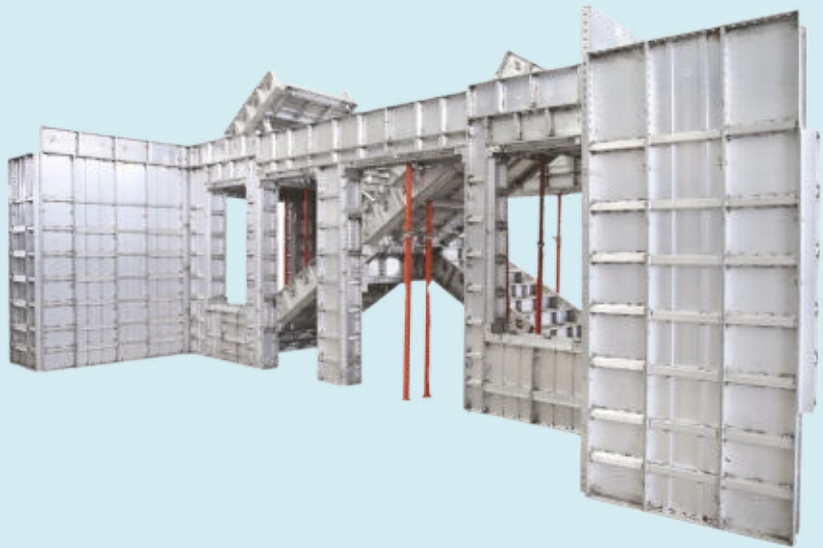
Remson Group

An ISO 9001:2015 Certified Company

Remson Group has been promoted by the entrepreneurs having cumulative experience of more than 50 years in the field of Aluminium Extrusion Products. Remson has always believed in creating the best quality aluminium extrusion products, using the latest technology. Research, innovation and a futuristic vision of the promoters of Remson Group has created a remarkable legacy.

Aluminium Formwork Systems by Remson – are undoubtedly one of the best quality Formwork & Scaffolding Systems for construction industry. We understand the concerns of construction industry and with our products, we are providing amazing benefits and answers to the most common issues of the industry.





Aluminium Formwork Solutions

As the world continues to grow every single day, demand for infrastructure grows as well. In recent years, the construction industry has transformed their process completely. The technology is taking place of traditional construction methods. Aluminium Formwork Systems are much more sturdy, they have longer lifespan and they save a lot of money in the long run.

The traditional scaffolding methods using plywood and timber are inadequate to bear the high load of concrete in bigger construction projects. They free up a lot more space, they need less maintenance and require less labour to manage. Also, they can be reused many more times compared to traditional formwork and scaffolding systems.

Remson Aluminium Formwork Systems makes construction process for Walls, Floor Slabs, Columns, Beams, Stairs, Window Hoods, AC Hoods, and Balconies faster and much more cost effective.

Available Formulations

Wall Panel

Deck Panel

Deck Beam

Stair Panels

BSL/ SL/ SI/ PH/ SO

EB/ MB

Wedge/ Round/ Long Pins

Embedded/ Reusable Ties

Steel/ Aluminium Props

Embedded/ Reusable Steel Brackets

Subsidiary Materials



Ultimate Strength. Ultimate Longevity.

Material Quality

Aluminium (A6061 - T6)

Remson Aluminium Formwork Systems only uses the best quality raw aluminium for manufacturing extrusion products. We understand the importance of quality and strength of the metal because it is directly linked to the safety of people and longevity of the infrastructure.

Aluminium reduces the need to use steel which saves money and it also has high scrap value. Aluminium is light weight hence it is easy to use and transport them with minimum personnel. Its precise dimensions and accurate angles make it easier for the developers to program construction sequences.

Basic Panel Dimensions

Wall Panel	600 (W) X 2300/ 2450 (H)
	500 (W) X 2300/ 2450 (H)
	450 (W) X 2300/ 2450 (H)
	400 (W) X 2300/ 2450 (H)
	300 (W) X 2300/ 2450 (H)
Deck Panel	600 (W) X 1200 (H)
	450 (W) X 1200 (H)
Deck Beam	150 (W) X 900 (H)
	150 (W) X 1050 (H)

The best quality, guaranteed!



Wall Panel

Useful for creating concrete walls – available in 5 width sizes & 2 height sizes.



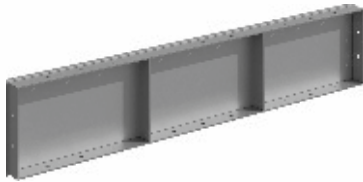
Incorner

Useful for creating 90-degree corner space where two wall panels join inside.



Wall End Panel

Useful for creating door & window sections where there are wall panels edge.



Beam Panel

Useful for the coverage of door, window, and beam opening sections.



Rocker

Useful for assisting the wall panels from the bottom, after concrete pouring and horizontal accuracy alignment.



Wall End Panel Cap (WEP Cap)

Useful for covering the edges of the beam opening sections of door & window.



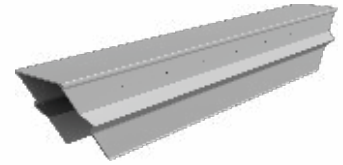
Aluminium Support

Best suited for usage with increased height and load capacity requirements.



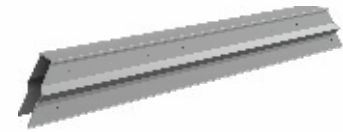
Deck Panel

It forms the horizontal surface for casting of slabs. It is built for proper safety of workers.



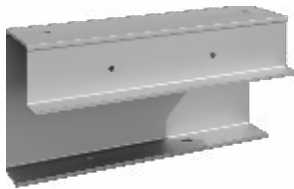
End Beam

Useful for sustaining alignment of slab panels & distributing load from slab on prop head & middle beam.



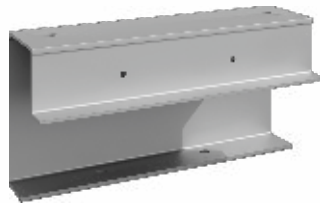
Middle Beam

Useful for supporting the slab panels, it is used to join the prop heads.



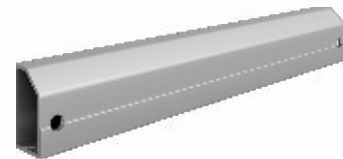
Beam Slab Soffit Length (BSL)

Useful for connecting an end cap with beam panels on the top of window or door section.



Prop Head

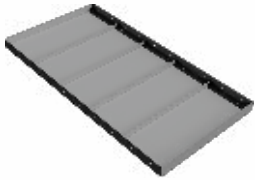
It connects the middle and end beams and distributes the concrete load among props.



Joint Bar

Best suited for usage with increased height and load capacity requirements.

Aluminium Formwork Products



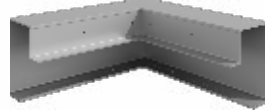
Slab Panel

The slab panel will be used to support the concrete weight during concrete pouring and casting.



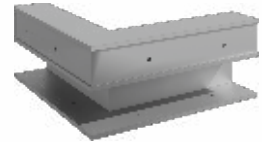
Slab Corner

Useful for connection between wall panel & slab panel.



Slab Incorner

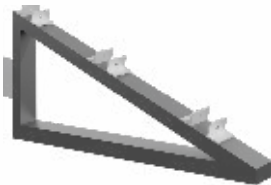
Useful for sustaining alignment of slab panels & distributing load from slab on prop head & middle beam.



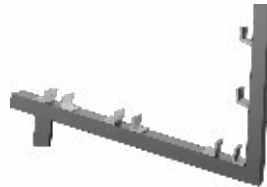
Slab Outcorner

Useful for connecting an end cap with beam panels on the top of window or door section.

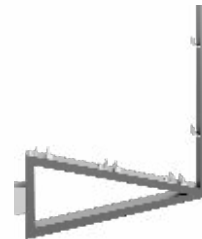
Platform Brackets



Elevator Bracket



Slab Bracket



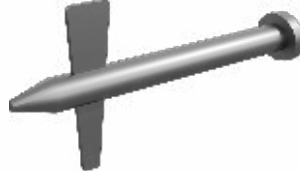
Wall Bracket

As a substitute of scaffolding system, these wall platform, slab platform & elevator platform will be fixed on the concrete (wall/slab/elevator) & used as working platform for workers.



Round Pin & Wedge Pin

Most common locking system which can be easily managed using common tools.



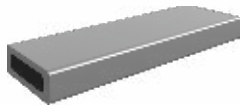
Long Pin & Wedge Pin

Useful for attaching joint bars with prop head to connect middle and end beams.



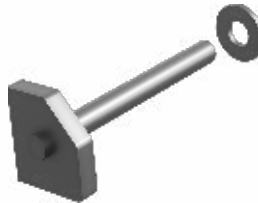
Flat Tie

Flat ties of different dimensions to join wall panel to opposite side's wall panel.



PVC Sleeve

Installed between the wall panel and opposite side's wall panel to make way for flat ties.



Bracket Bolt & Nut

Useful as an embedded anchor to fix brackets on concrete surface during installation.



Hook

Installed on the bottom of wall panel surface, it holds steel bar sustaining the pressure of concrete to prevent leakage.



Kicker Bolt, Nut & Washer

Useful as an embedded anchor to fix panels on concrete surface during installation.

Special Features

The reasons that differentiate us from others!



Low Formwork to Forming Area Ratio



Can be installed and managed by unskilled labour



Useful for creating walls, columns, beams & floor slabs



Can be used to form concrete columns & beams together



Light weight and does not need cranes/ heavy machinery



Suitable for creating multi-storey infrastructure



Easily adaptable as per the architectural design



Allows creation of cellular designs and saves cost



Reduces debris and material wastage at site



Accurate dimensions give precision in construction

Special Advantages

The reasons why your construction will be better!

- Uniform consistency in concrete structure
- Strong and crack-free concrete structure
- Concrete structure can withstand shocks
- High quality finishing and precision
- No plastering required at all
- Floor slab forms can be removed without moving props
- Simultaneous casting of wall & slabs possible
- Can be reused for more than 200 times
- All the elements required for a modern design
- Perfectly suitable for repetitive architectural design

Manufacturing Plant & Process

Remson Aluminium Formwork Products are created in the world-class manufacturing facility located at Lodhika GIDC in Gujarat, India. Our manufacturing plant is an ISO 9001:2015 certified plant.

Remson Group uses the latest technology Aluminium extrusion machines and equipment to create products with uniform cross-sectional profile and strength. All types of shapes required for construction, can be created using this technology – be it solid, hollow or semi-hollow.

At Remson Aluminium Formwork Systems, we believe in calculating precise dimensions and following standard operating procedure to create anything.



Aluminium Formwork Process



Step 01: Melting Furnace

The top-quality raw materials are prepared in the furnace for casting



Step 02: Billet Casting

The Aluminium billet is casted as per the required shape and size



Step 03: Extrusion Press

The Aluminium is extruded as per shape & size.



Step 04: Panel Cutting

The finished panels are cut to precise sizes as per the requirements



Step 05: Pin-hole Punching

As per the specification and usage requirements, pinholes are punched



Step 06: Tie Notching

Tie notching is done for achieving the perfect shape and dimensions



Step 07: Friction Stir Welding

Finally, the components are welded to perfection using latest technology



Step 08: Panel Polishing

The panels are finally polished for protecting it from friction and wear & tear



Step 09: Unit Classification

All the manufactured units are quality checked & stored using the latest technology.

We shall be there, whenever you need us!

We have the team of engineers who knows the nitty-gritty of Aluminium Formwork Systems thoroughly. Our expertise will make it easier for you to go ahead with your construction process.

We can provide complete training and guidance for installing and uninstalling Aluminium Formwork Systems. However complex your design could be, we will see that it stands its ground firmly with our products. Our goal is to help you finish your project on time and save money while you do so. At the same time, we are also concerned about the safety of your personnel.



Wall & Slab Applications



Wall & Slab Applications





Architects and engineers not only built but also enhance the quality of life. Their creativity and technical skill helps to plan, design, construct and operate the facilities essential for life. It is the need of time to analyze the depth of the problem and find effective solutions to enhance the speed of construction.

Remson aims to maximize the use of modern construction techniques and equipments for construction industry. We are covering each & every aspect related to Aluminium Formwork. Remson Formwork is able to provide high quality construction at unbelievable speed and at reasonable cost.

Trust the Remson, it is becoming synonyms to Aluminium Formwork.





Manufactured by :

Remson Rail Systems INC

G-1908, Lodhika GIDC, Kalawad Road,
Metoda - 360 021. Rajkot. (Gujarat) India.

Ph. : 02827 287232

02827 287233

Mo: 09824 568464

E : info@remsonrail.com

W : www.remsonrail.com

An ISO 9001:2015 certified company

Note:

All the design & development rights of the displayed Formwork system is Held with Remson Railing Systems INC. Production/Reproduction of the same may be liable for legal action.
Formwork System displayed in catalogue is for representation purpose only. Final product may vary than displayed product in catalogue.